

September 2015

We're Your One Stop Temp Shop

One simple model number is all it takes to order our complete, **Ready-to-Install Temperature Assemblies**. They include your choice of:

Universal PC-Programmable, Smart HART® and Fieldbus Temperature Transmitters

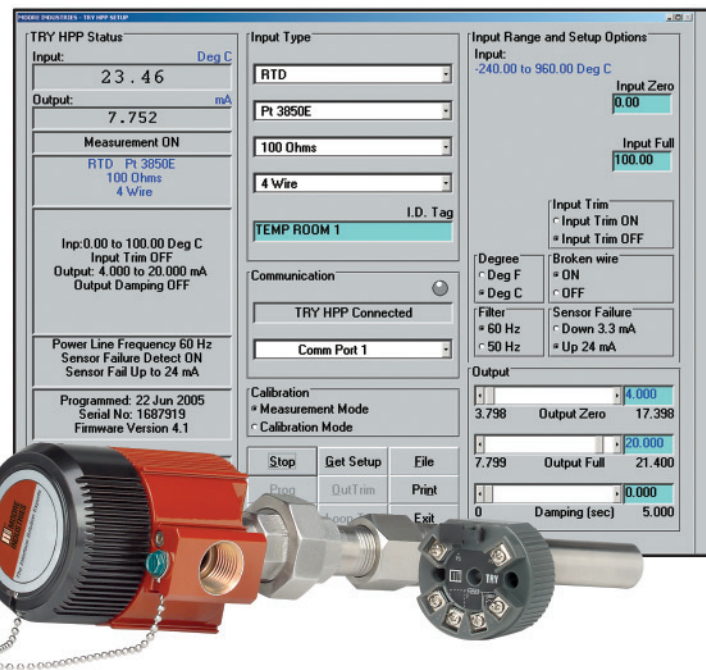
The unique "WORM" Flexible and Straight RTD and Thermocouple Sensors

General, Hazardous Area and Explosion-Proof/Flameproof Connection Heads and Enclosures

A Wide Array of Thermowells, Flanges and Fittings

Worldwide Hazardous Area Safety Certifications

Functional Safety IEC 61508 exida Certification



Universal Intelligent Temperature Transmitters

TRY, TRX & TDY
2-Wire, PC-Programmable Temperature Transmitters With and Without Display

RTD Thermocouple Ohm Millivolt

THZ³ & TDZ³
2-Wire, Smart HART[®] Dual Input Temperature Transmitters With and Without Display

4-20mA HART[®]

STZ & STA
Functional Safety IEC 61508 Temperature Transmitters and Combination Temperature Transmitter and Alarm

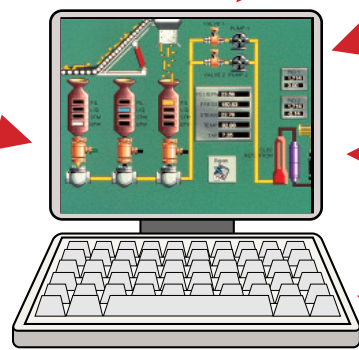
4-20mA HART[®]

RIY, TIY & SPT
2-Wire & 4-Wire Site-Programmable Temperature Transmitters With Display

4-20mA

Capabilities

- Input-to-output analog accuracy of up to $\pm 0.014^{\circ}\text{C}$ ($\pm 0.025^{\circ}\text{F}$) is the absolute best in the industry
- RTD (2-, 3- and 4-wire; Pt, Cu, Ni), thermocouple (J, K, E, T, R, S, N, C, B), mV and ohm inputs
- -200 to $+2300^{\circ}\text{C}$ (-328 to $+4172^{\circ}\text{F}$) ranges
- Long-term stability delivers up to 5 years between calibrations
- Analog, HART, MODBUS, FOUNDATION Fieldbus, PROFIBUS and Ethernet outputs
- PC-, HART- and fieldbus, Ethernet site-programmable models
- Real-time process readout on large integral displays
- 2-wire (loop-powered), 4-wire (line-powered) and universal powered models
- Isolated, linearized and RFI/EMI protected
- Patented "Total Sensor Diagnostics" speeds troubleshooting
- DIN-rail, surface, relay track, pipe and explosion-proof/flameproof
- Ready-to-install assemblies with sensor, transmitter, thermowell, fittings and well head



NCS
NET Concentrator System[®]
Intelligent Process Control and Distributed I/O



HART[®] MODBUS[®]

Ethernet MODBUS[®] OPC

FOUNDATION Fieldbus[™] PROFIBUS

MODBUS[®] RTU (RS-485)

Analog Output or Relay

SPA²
Combination Universal Temperature Transmitter and Alarm

Current, Voltage, RTD, Thermocouple, HART[®]



TMZ
4-Wire, MODBUS[®] Temperature Transmitter



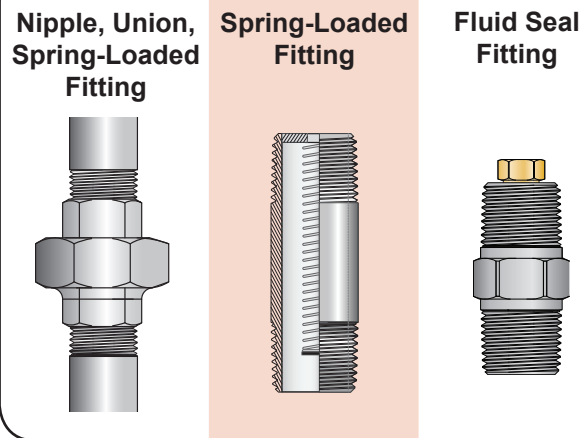
TFZ & TPZ
FOUNDATION Fieldbus[™] PROFIBUS Temperature Transmitters With Display



*All product names are trademarks of their respective companies.
*HART is a registered trademark of the HART Communication Foundation.
NET Concentrator System is a registered trademark of Moore Industries-International, Inc.

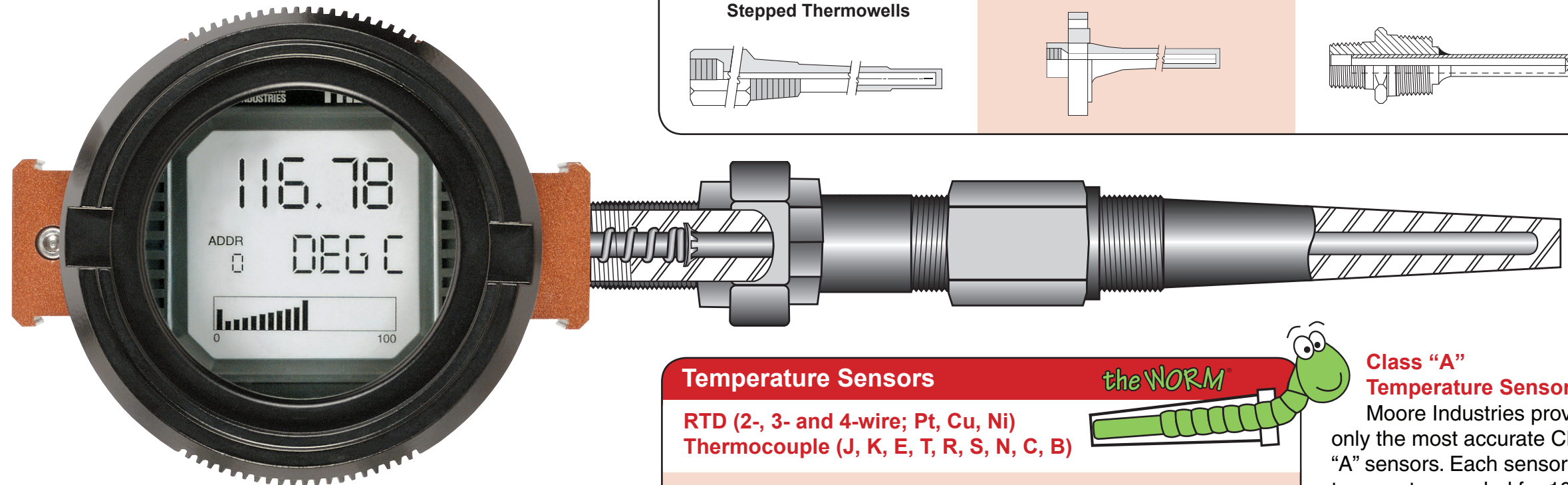
Complete, Ready-to-Install Temperature Assemblies

Process Connections



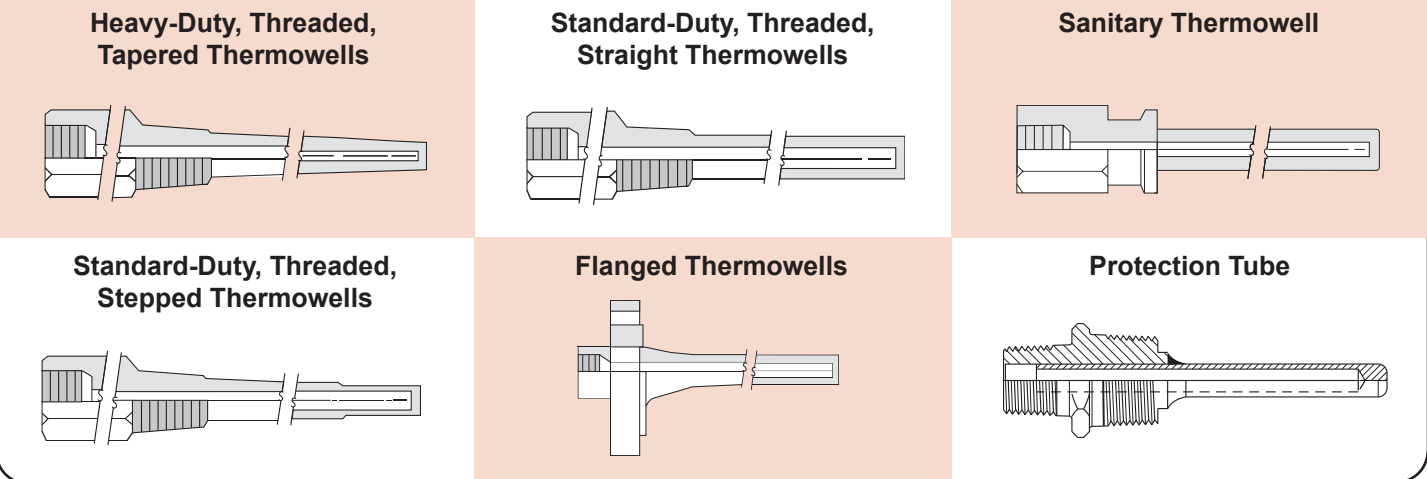
We're Your One Stop Temp Shop
One simple model number is all it takes to order our complete, **Ready-to-Install Temperature Assemblies**.

All you have to do is install them into your process, connect a couple of loop wires and you're in business.

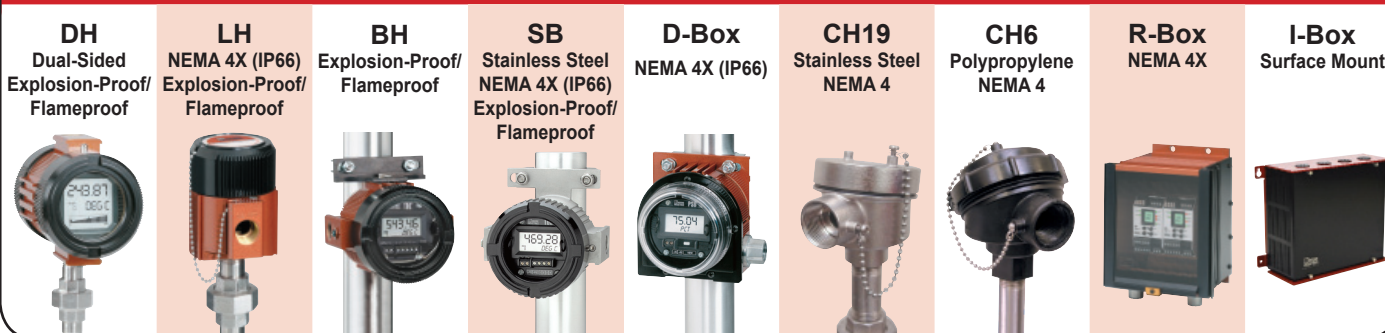


Thermowells

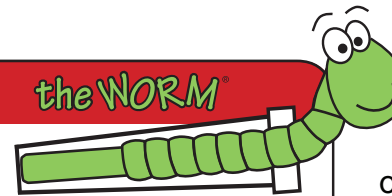
Stainless Steel 304, 316, 310 and 446; Brass; Carbon Steel (others available)



General and Hazardous Area Connection Heads and Enclosures



Temperature Sensors



RTD (2-, 3- and 4-wire; Pt, Cu, Ni)
Thermocouple (J, K, E, T, R, S, N, C, B)

"the WORM®" Flexible Sensors



Straight Sensors



Fixed Immersion Probe Sensors



Sanitary Sensors



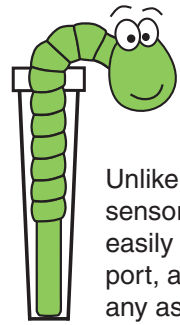
Class "A" Temperature Sensors

Moore Industries provides only the most accurate Class "A" sensors. Each sensor is temperature cycled for 1000 hours, at 0°C and 600°C, to ensure each meets our precision requirements.

After passing this test, the sensors are assembled into a sensor sheath, and cycled again to pass a conformity test.

This process allows the sensor to achieve a stable resistance and maintain its coefficient accuracy over a greater lifetime after final assembly.

“the WORM®” Flexible RTD and Thermocouple Sensors



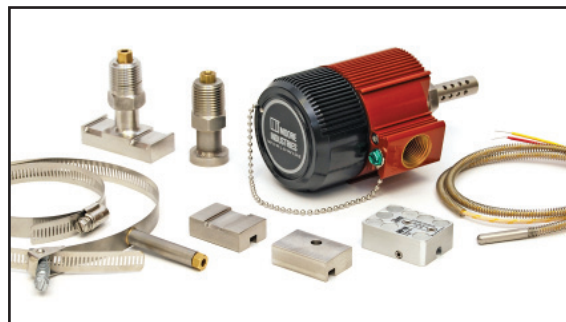
The standard for our temperature assemblies, this versatile, spring-loaded, flexible sensor trims-to-length, providing quick and easy installation.

Unlike conventional sensors, such as straight sensors, the WORM's flexible design allows it to easily slide right through the connection head port, and into the assembly, without removing any assembly components.

Ready-to-Install Temperature Assemblies for Surface Measurements

Featuring our innovative WORM Flexible Temperature Sensor, these versatile temperature assemblies mount directly to tanks, pipes, motors, compressors, reactors or anywhere else a skin (surface) temperature measurement is needed.

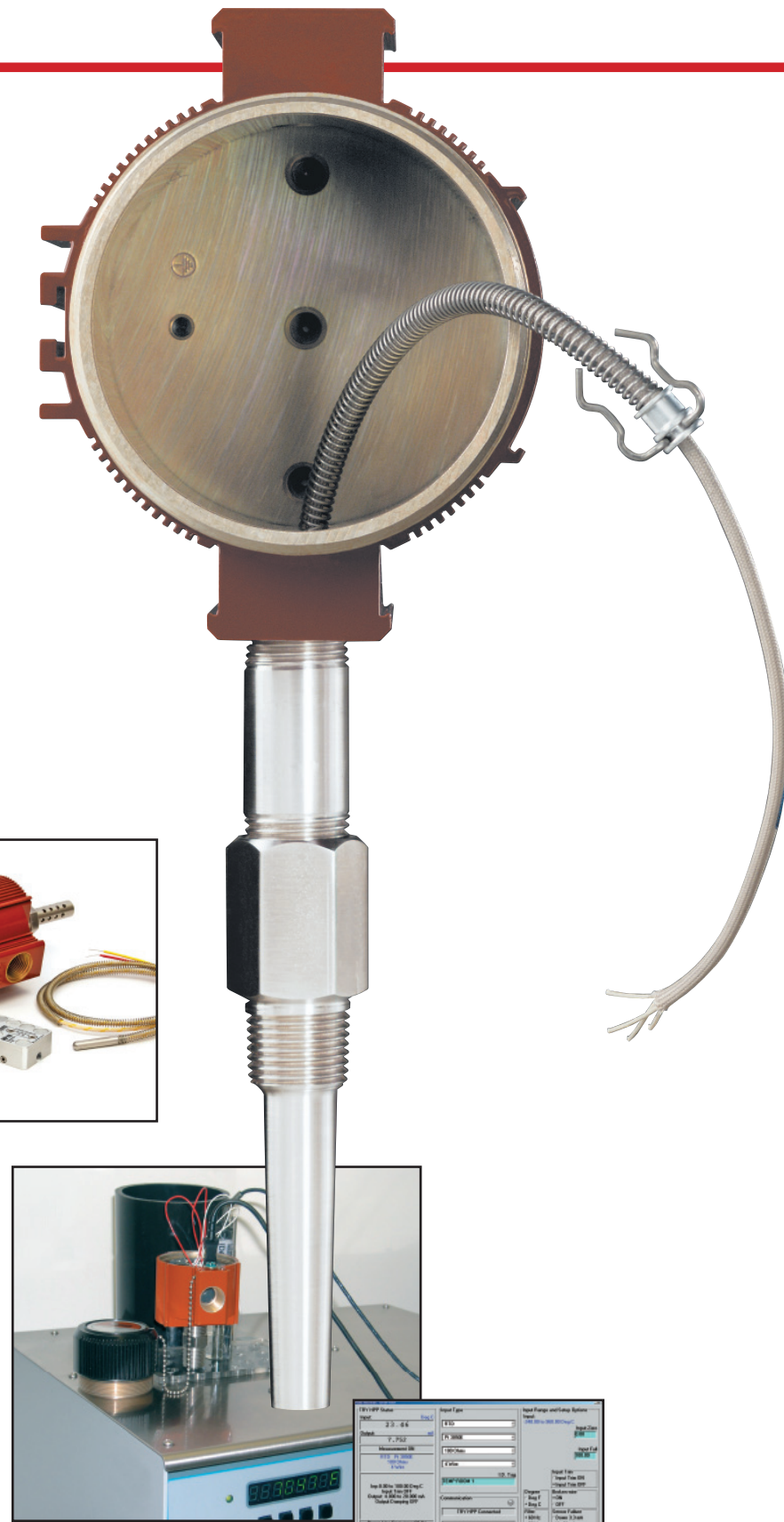
Precise engineering and solid, sturdy construction allow these assemblies to endure the harshest plant conditions and field environments.



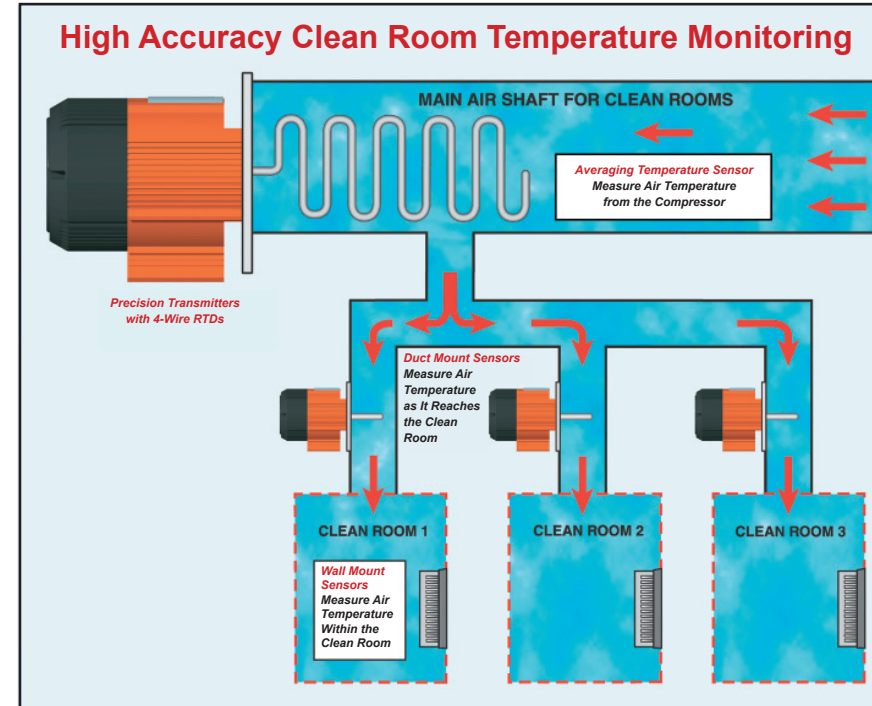
High-Accuracy Factory Calibration Services

When applications demand exceptional accuracy, our Sensor-to-Transmitter Trimming provides measurement accuracy up to an amazing $\pm 0.014^{\circ}\text{C}$ ($\pm 0.025^{\circ}\text{F}$).

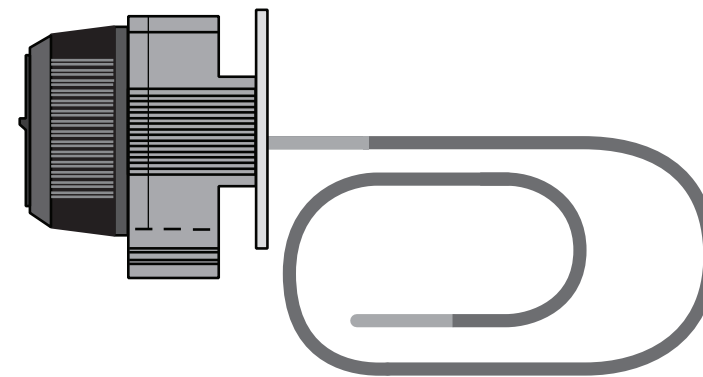
Performed in our state-of-the-art “Calibration Suite”, high accuracy factory calibration assures that our sensor and transmitter combinations work together to deliver exceptionally precise measurements.



Sensor-to-Transmitter Trimming



Surface-Mount Air Duct Average Temperature Monitoring System



Wall/Duct Mount Temperature Assembly for Monitoring Cleanrooms & Air Ducts



Temperature Monitoring Solutions for Hi-Tech Facility and Process Control

In numerous hi-tech applications such as semiconductor, micro-electronics, pharmaceuticals and biotech, maintaining stable facility and process temperature conditions is a primary factor for on-spec product and predictable yields.

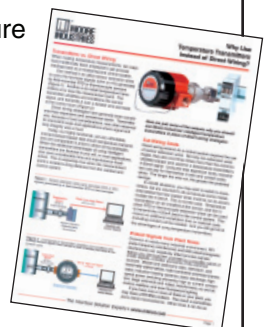
Moore Industries' Hi-Tech Solutions reliably monitor ambient and process temperature conditions in manufacturing operations, machine tools, cleanrooms, laboratories, storage and production facilities.

Wall-Mount Room Air Temperature Monitoring System



“Why Use Temperature Transmitters Instead of Direct Wiring?”

Running temperature sensors directly to your DCS or PLC seems cheaper, but in the long run (especially with long sensor runs), is it really? Learn how to save time and money using transmitters.



Ask for a copy of this white paper.

*The WORM is a registered trademarks of Moore Industries-International, Inc.

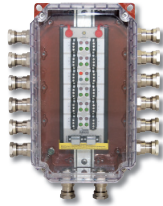
Functional Safety Series

The **FS Functional Safety Series** products are exida certified, SIL 3 capable, and designed for use in your Safety Instrumented System (SIS). In addition to the STZ Functional Safety Temperature Transmitters and STA Safety Trip Alarm/Logic Solver, the line also includes SSX/SST Functional Safety Isolators and Splitter, and SRM Functional Safety Relay Module.



Complementary Temperature Solutions

MooreHawke **Fieldbus Device Couplers and Power Supplies** deliver a fast and easy way to connect, protect, power and terminate multiple temperature transmitters in FOUNDATION fieldbus™ and PROFIBUS PA segments.



Combination **Limit Alarm Trip/Transmitter** instruments reduce costs when both temperature alarming and monitoring functions are needed at the same location.



Featuring a NEMA 4X front panel and extra-bright display, our **Process Controllers** control and monitor a temperature process variable in batch and continuous processes.

Our industry-first **HART Interfaces and Monitors** unlock the full potential of HART transmitters by allowing up to three additional measurements from a smart transmitter with no additional process penetrations or wiring.



Worldwide Hazardous Area Safety Certifications

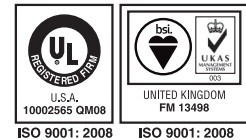
Our commitment to quality extends to individual products. Our instruments hold hundreds of approvals.

Explosion-Proof/Flameproof
Intrinsically-Safe: 'ia' and 'ib'
exida Certified to IEC 61508 and SIL 3 Capable
Non-Incendive/ Type 'n'
Increased Safety 'e'
Encapsulation 'm'
General Location/ EU Directives



ISO 9001 Registered

Our ISO 9001 certification is verified evidence that every aspect of our company, from product conception to after sales support, is part of a carefully planned and implemented quality system.



Our Web Site has everything you need to find signal interface instruments fast. But what if you don't have even a little time to browse our site?



You'll get an answer quickly!

Try it out at:
www.miinet.com/ehelp

Let Us Do The Work.
Get what you need fast at E-HELP EXPRESS. Our application experts are ready to help.

- Do You...**
- Need help specifying a product?
 - Have application questions?
 - Need installation assistance?
 - Need a price and delivery quotation?
 - Have product certification or safety-related instrumentation questions?
 - Want application notes, a data sheet or a user's manual?